

CCDElabs

Your Gateway to Success Towards CCDE Labs

Ship4U
Scenario 2
Real Labs
v3.0

THIS PAGE IS INTENTIONALLY LEFT BLANK

www.passcdelabs.com

CCDE Labs Policies:

1. We highly discourage sharing of the workbook hence the workbooks are mapped to Laptop/Desktop MAC address. If one tries to open the workbook on other desktop or laptop than the registered MAC address; account will get locked and we will not unlock it for any reasons.
2. The workbook does not have print access; kindly do not request to enable to print access.
3. One will be provided with free updates up to 90 days from the date of purchase, post that one need to renew his/her account to access the latest update. Post 90 days the workbooks will cease to open.
4. If one wish to renew their subscription/account, you need to renew within 90 days or before the account gets expired. Post 90 days one can renew their account however the renewal will be considered has a new purchase. Hence, we encourage one to renew within 90 days of the purchase.
5. The renewal cost is 2999 USD if one pay within 90 days, if one fail to renew then the cost will be equivalent of a new purchase. (The renewal price can be changed at any time, without informing the client)
6. Every workbook is uniquely identified for each user with hidden words. If one shares his/her workbooks with others, and if the system detects the share, the account will be banned and we will not entertain any explanation of any sort.
7. For any queries regarding Questions/Solutions, you can contact us on email @ support@ccde-labs.com or skype @ ccdelabs. Response time to any of the queries is 24 hours.
8. We do require CSCO ID, CCIE number, National ID, Mobile Number and Official email id for security and watermark purposes. One should have CCDE written passed and CCDE lab should be booked for the coming quarter. We do not sell without these details. We do Manual background verification of the details provided, so request to give us the correct CSCO ID and official email id via remote access.
9. The workbooks are in secured pdf format and delivered via email.
10. License is provided for only one Device. And we don't give license again if the device crashes or company security policies. Please install license on the device cautiously as the license will not be provided again.
11. We do support devices running Windows OS, Mac OS, Android and Mac iOS only
12. We do not provide Refund in any circumstances once the product is sold.

13. This policy is in effect from 23 November 2016 and in immediate effect for new clients and new renewals. Old clients will continue with the old Policies until the accounts get expired.

14. If there is any update, one will receive the update automatically on their registered email-id.

15. For any future update you can check our update page on www.passccdelabs.com

www.passccdelabs.com

Guidelines

Before starting, please read the below guidelines:

1. In this module you will be creating, analyzing, validating and optimizing a high-level network design. All relevant resources needed to successfully complete this module are provided within this module. No device access is provided.
2. The menu bar on the same screen can be used to navigate to:
 - **Exam content:** Here you will find the exam questions. This module is scenario based and contains approximately 25-30 web-based items. No device access is provided.
 - **Resources:** Here you will find provided resources. An initial set of resources is provided at the start of the module. Additional resources are provided as you progress. Resources are cumulative and remain available throughout the remainder of the module. It is recommended to read all the provided resources prior to answering a question.
 - **Guidelines:** If you want to review these guidelines again during your, you can find them here.
 - **Help:** Here you will find more information about the exam environment, module navigation and functionalities.
 - **End Exam Section:** Clicking this button will end this exam section.
3. Backwards navigation is disabled; once you proceed to the next question, you will not be able to return to the previous question.
4. Question point values will not be visible. More complex items might have partial scoring opportunities.
5. Both level feedback can be provided at question level. Feedback will be processed, but Cisco will not reach out to you to discuss any feedback provided. Any time spent on providing feedback will not be compensated.
6. Access to selected Cisco online documentation, including Cisco Validation Design documents, is available from your desktop. However, the availability of this documentation is outside the CCIE/CCDE Team competence.
7. If you suspect an issue with your exam environment, contact the lab proctor as soon as possible.
8. You have 2 hours to complete this module. If you finish early, you may start with the next module, but any unused time will not be carried over to the next module.

Introduction:

Question Navigation:

- Please respond to each question before you continue to the next question
- When you have completed a question, click NEXT on the button right of the screen to move to the next question
- You will not be permitted to return to a question after you have clicked NEXT.

Documents:

- Scenario documentation is presented at the beginning of each section. You can access these documents by clicking the documents button at the top of your screen.
- Additional scenario documentation appears throughout each section. You are notified via a notification screen when new documents become available. When a new document becomes available, a graphical icon appears on the Documents button and next to the new document inside the document window.
- To highlight text within the documents, select the text that you want to highlight, click the Highlight button at the top of your screen and change the highlight color. You can also remove highlighting. The highlighting persists as you progress through question within this section you can highlight all documents; for example, graphics cannot be highlighted.

Exam Display:

- The exam is intentionally designed to use only half of the screen to display questions. This allows you to view supporting document while you answer the questions.
- Documents can be resized by using the resize handle in the lower right corner of the window.
- You can increase or decrease font size for the text from the drop-down menu on the top right of the screen. You can change Normal Font, Small font to medium font or large font. If you use medium or large font, you might need to use scroll bars to view the entire screen. In addition, a few exam components, such as some interactive items, remain at their original size to ensure that the content displays properly.

Task Time:

- You have four hours to complete two sections of the exam in the morning and four hours to complete two sections in the afternoon. The exam timer display on the top of your right site.
- A Section Specific progress bar is also displayed at the top right to help you manage your time within each specific section of the exam. The progress bar represented the percentage of material that is completed the specific section. It restarts when you begin another section of the exam.
- Please use the timer and progress bar to ensure good time management during the exam.

Notes:

- You are provided with an electronic notepad to use to take notes during this section of the exam. Click Notes at the top of screen to access the notepad.
- You can copy, paste, Undo and redo notes that you make within the electronic notepad. However, you cannot highlight material on the notes pages or copy and paste from question or documents pages.
- Your notes persist as you progress through the questions in this section.

Comments:

- During the exam, use the comments button at the top of screen to record specific comments on any question.
- Click Save to store a comment, or click Cancel to discard a comment.
- Comments are reviewed and considered during exam maintenance and are used improve the exam. Cisco will not contact you about comments.
- The amount of time that you use to enter comments is considered to be part of the total time that you allowed for completing the exam, In other words, the exam clock will not stop while you enter comments.

Click the Introduction button on the top of the next screen to access this introductory information, when you are ready to begin this section of the test. Click Next.

WELCOME TO SHIP4U

In this module of the exam, assume that you are a network architect working for the retail shipping company Ship4U. Ensure that you read and consider all information provide to you through documents, drawing, emails and other relevant information.

Good Luck!

www.passccdelabs.com

Ship4U Introduction

Introduction

Ship4U is a US based company retail shipping company with major locations in these cities:

- Portland OR
- Wichita KS
- Boston MA
- Dallas TX

Ship4U provides consumer packaging and shipping services across the continental US with approximately 1500 retail locations. The company frequently gets request to ship package internationally. Today they must forward these packages to a third-party company which incurs additional cost for the consumer. Ship4U wants to be recognized as a worldwide leader in the retail shipping industry. To alleviate some of the costs of shipping internationally. Ship4U is the merger negotiations with another retail shipping company located in Europe of a similar size.

A new CEO and CIO have recently been hired to revamp the business operations across Ship4U. The CEO is focused on business drivers such as cost effectiveness, elasticity and business continuity. The CIO has his own set of initiatives such as consolidation, virtualization and resiliency. As a consultant you will be responsible for driving both business outcomes.

Ship4U currently operates with a lean IT staff. The news of a pending merger has the staff quite nervous of running such a large network. The staff has also been tasked with deploying an IP-Based, video surveillance system across the stores.

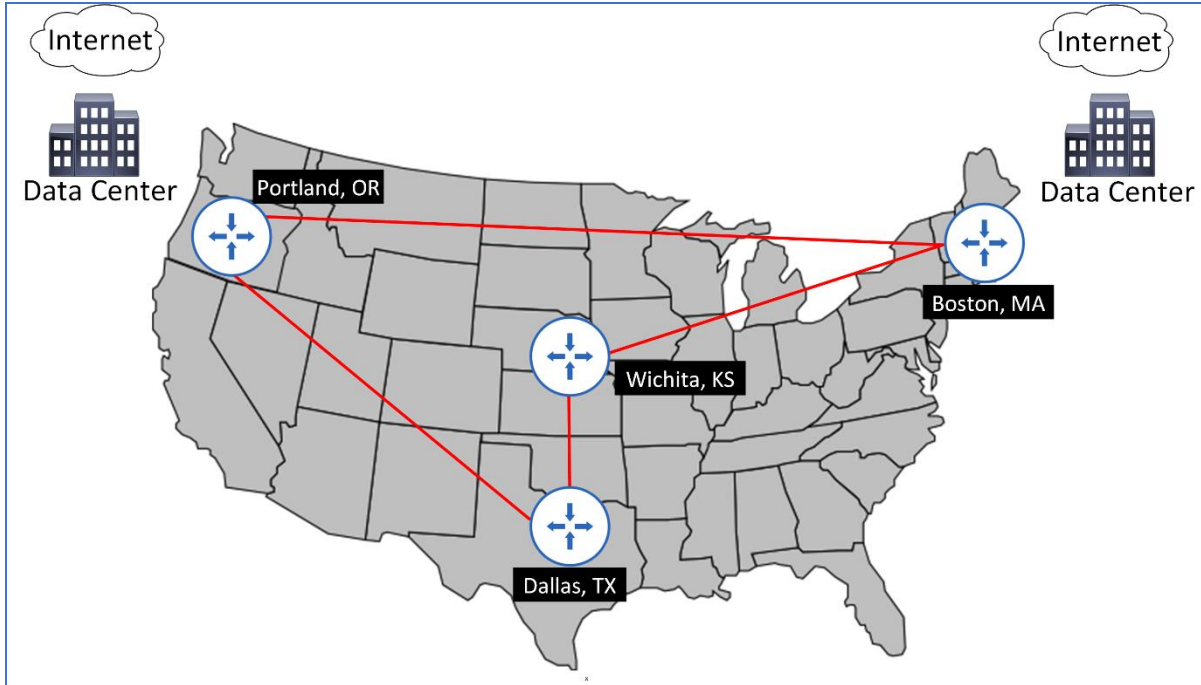
Recently one of the retail stores was compromised via an alarm panel with a default password. Attacker gained access to the shipping system, which contained confidential customer information. The action caused Ship4U to lose some credibility in the industry and lose some customer. The IT staff is now evaluating efficient technologies to secure these devices on the network.

Ship4U was recently audited and it was discovered that confidential information was being sent in the clear across public crisis.

You have recently been contracted as a consultant to augment the current staff to solve technical issues, secure the network and design solution to the pending merger.



Current Core Topology



The four hub locations are interconnected in a ring with high-speed 10 Gigabit Ethernet Metro-E circuits from various service providers. These core routers form the OSPF are 0 backbone today. These hub locations also serve large distribution site with approximately 400 employees per location. A 24-hour call center runs across these four locations as well. Internet services are provided to all locations via the Boston and Portland distribution centers.

The services providers offer these classes of service with guarantee.

	Bandwidth Percentage	Guarantee	Packet loss
Gold	25	99.9	<= 05%
Silver	30	99.5	<= 1.0%
Bronze	25	98.5	<= 1.5%
Default	10	95.0	<= 5.0%



As mentioned approximately 1500 retail store locations are connected to the nearest hub locations via various methods, including legacy Frame Relay, T1, and ATM. These services have become cost prohibitive because provider is moving to the higher speed technologies with cheaper operating costs. The connections terminate in dedicated WAN routers to create different across per region.

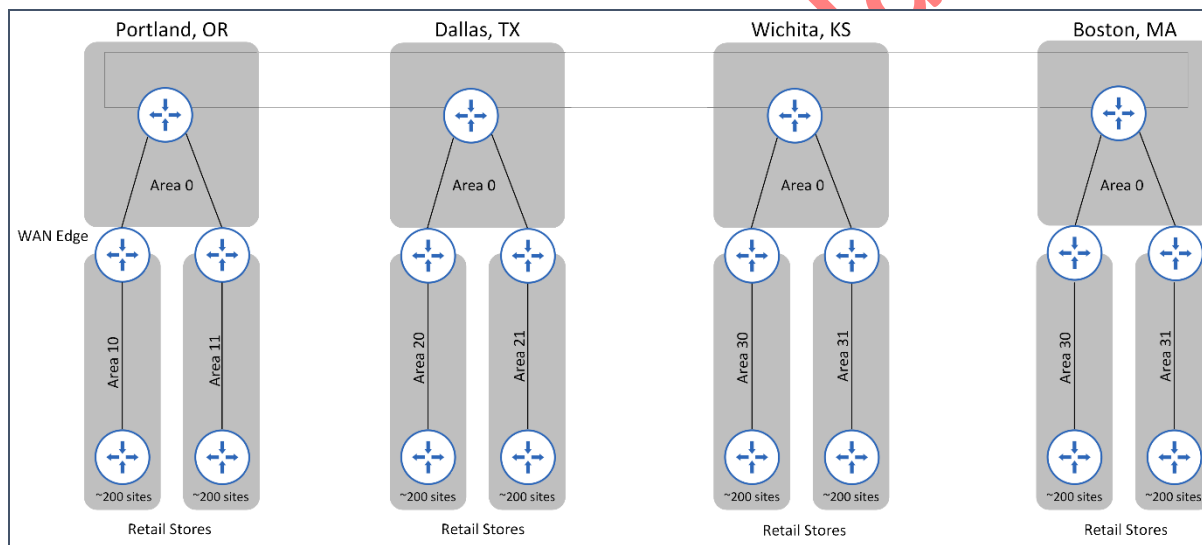
Each location has approximately 10 employees

The primary application used in the store is the point-of-sale (PoS) system for customer transactions. The system is sensitive to delay and cannot tolerate $\leq 1\%$ packet loss.

The video surveillance vendor claims that the traffic must be treated like voice traffic.

Several high-profile retail stores have requested additional circuits for redundancy.

Retail Store Topology

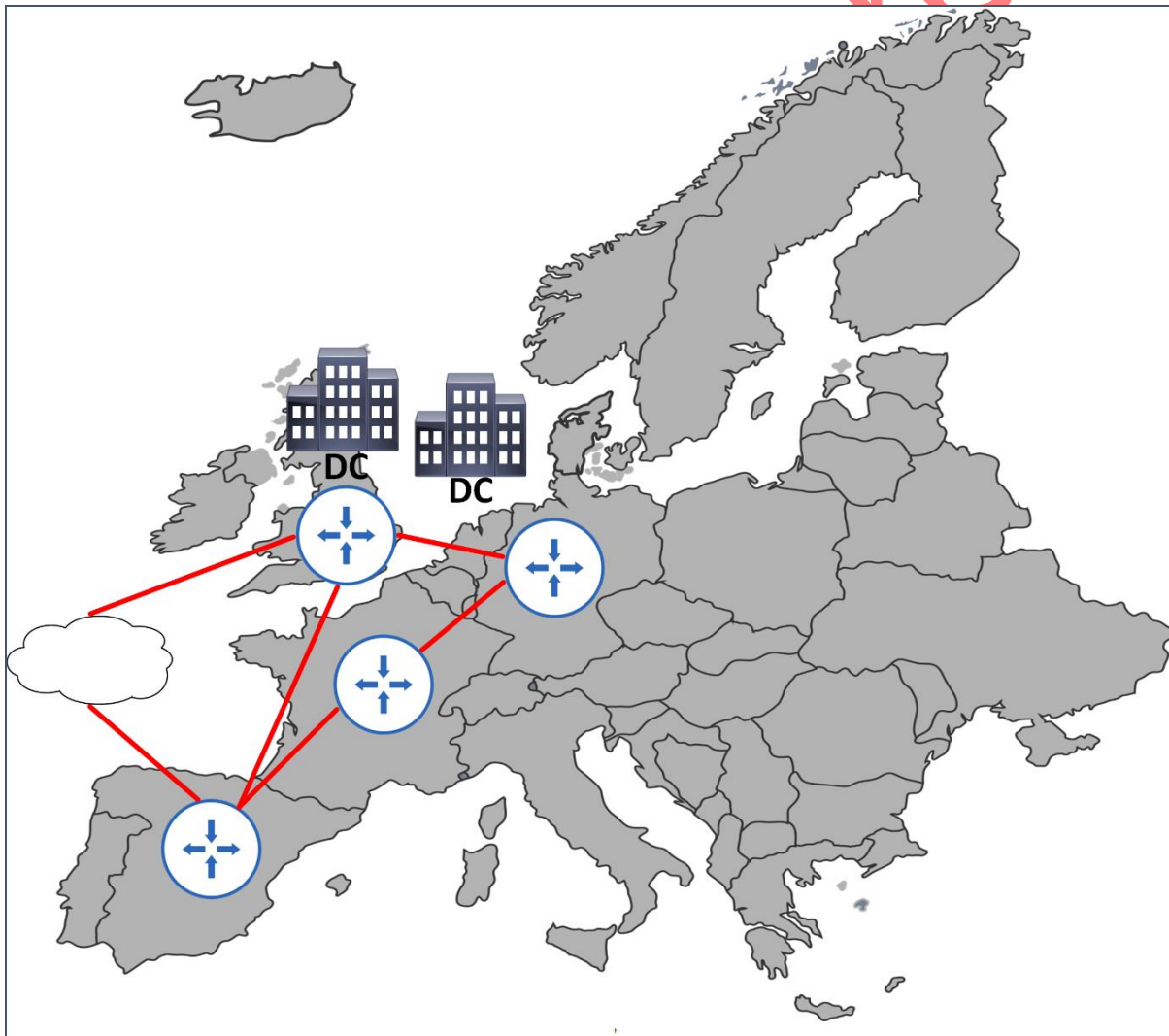


Site Profiles

The US network also includes managed data centers. The first data center is in Boston, MA and is managed by ABC systems (ABC). The second data center is at Portland OR and is managed by XYZ systems (XYZ).

The Europe network consist of four main hub locations running MPLS L3VPNs utilizing OSPF as the underlying routing protocol. Two providers managed data centers are also in Europe both in the greater London area and are managed by EFG systems (EFG). The downtown London data center has 600 server and the Chiswick (suburban London) data center has 1200 servers.

The European retail network includes 350 retail locations that connect to the various hub sites similar to the US design.



Question 1:

Drag and drop the business drives from the left onto the Ship4U IT and network initiatives on the right.

Elasticity	Network consideration and virtualization
Access control	Adequate and responsive design
Cost effectiveness	Compliance with industry standard such as ISO
Business continuity	Network and service resiliency
Compliance	End-to-end network confidentiality

Answer:

www.passccdelabs.com

CCDElabs

YOUR GATEWAY TO SUCCESS TOWARDS
CCDE LABS

New Resources Available

www.passccdelabs.com

Multicast redundancy causing poor voice quality

From: Bruce G. Platt <bgp@ship4u.com>

To: 'Diana t. Peterson' <expert@design.biz>

Subject: Multicast redundancy causing poor voice quality

Hi Diana,

Thanks for leading us in deploying an RP in each of the main data centers. This made perfect sense because the multicast source resides in the data centers. The redundancy seems to work perfectly using MSDP because we recently had a failure in the Portland data center. We were still able to view the streams from the video recording system. However, since we deployed the video system, our call centers are experiencing choppy voice streams.

Please help us identify the steps to resolve this issue.

Yours truly,

//Bruce

WWW.PASSCCDELABS.COM

Question 27:

Which three actions and technologies must the Ship4U network team implement to resolve the issue?
(Choose three)

- A. Policy-based routing
- B. Classify application
- C. CoPP
- D. Q-in-Q
- E. Deploy QoS
- F. Map application to service provider classes
- G. Traffic engineering

Answer:

WWW.PASSCCDELABS.COM

Question 28:

www.passccdelabs.com

YOU HAVE REACHED THE END OF THIS SECTION

www.passccdelabs.com

CCDElabs

YOUR GATEWAY TO SUCCESS TOWARDS
CCDE LABS

THANKS FOR USING www.PASSCCDELABS.com WORKBOOKS

www.passcdelabs.com